

# Exploring the back-to-back houses in Harehills

**A family trail full of fun activities to help you explore and learn about the back-to-back houses**

## Introduction

The trail can be followed in part or as a complete route so that families can participate at a level that suits their children's ages and abilities. Be careful when crossing roads and when taking part in activities so that everyone remains safe.

Practical information: This trail is on public streets. All parts of the route have a pavement and dropped kerbs at junctions / road crossings. Note that the neighbourhood is hilly and some streets have steep inclines. Many streets on the route have free on-street parking.

## Activities

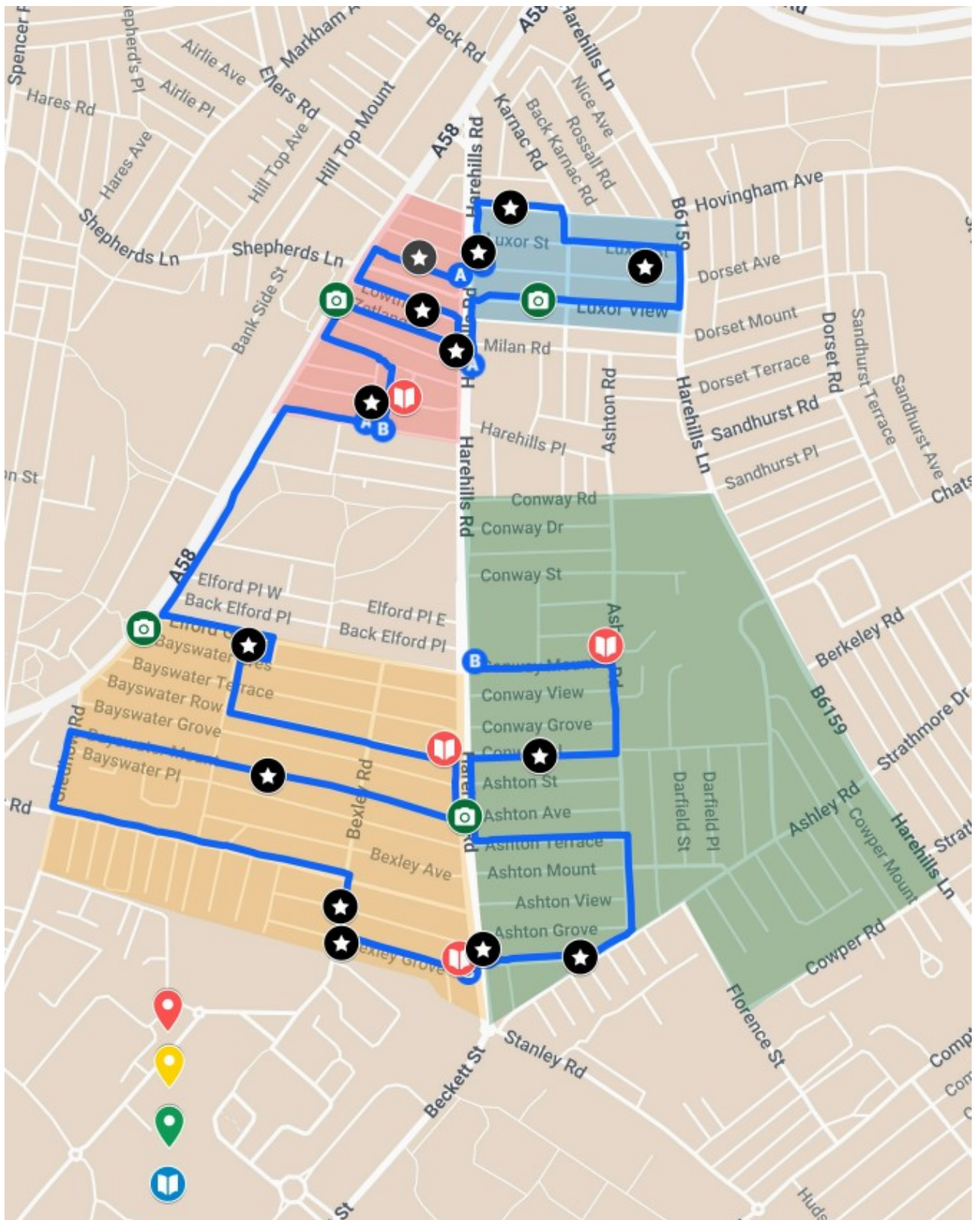
There are three types of activities on this trail -

**Questions and challenges** - these involve looking for things, counting and working out what things are.

**Facts - who lived and worked here?** - these provide information about the people who lived and worked in the houses in the past.

**Historic photos** - these show what the houses looked like in the past. Can you spot any differences between then and now?

Where there are questions, the answers can be found by scrolling down in the activity box.



# Questions and challenges

**Q1 - How many original dormers can you find in Lambton Terrace, Lowther Street and Zetland Place?**

Clue - look up and see the old designs.

**Q5 - Which streets have rows of large back-to-back houses?**



**Q2 - What is this?**



**Q6 - How many different house designs can you find on Bayswater Mount?**

Clue - look at all the differences in how the houses look, including the stone lintels above the windows, the decorative bricks below the roof and any houses on the ends of blocks that are different to the rest of the block.

**Q8 - What is unusual about the houses in Bexley Grove?**

These houses are different to the other back-to-backs in the area - how?



**Q3 - Find an old advertisement!**

Can you see the remains of an old advertisement that was painted onto the bricks?



**Q7 - What did this house used to be?**

What clues can you use to work out what this used to be?



**Q9 - When was the shop-house built?**

The shop-house on Harehills Road has a date stone to show when it was built - what year was it? Clue – look up!



**Q4 - What is different about the fanlights on these houses?**

The fanlight windows above the doors in the Lascelles series of streets are a different shape to most of the others in the area. What shape are they?



**Q10 - Can you spot a special feature in a garden in Ashton Place?**

One garden has a special feature - the only feature like this that is left in the area! What is it?



**Q11 - How many houses have wall insulation?**

Some of the houses in Conway Place have had insulation added to the external wall so they can stay warmer in the winter. How many can you find? Clue - you may have to look closely to find some as they look like they're made of brick!

**Q12 - How many split-level houses are there?**

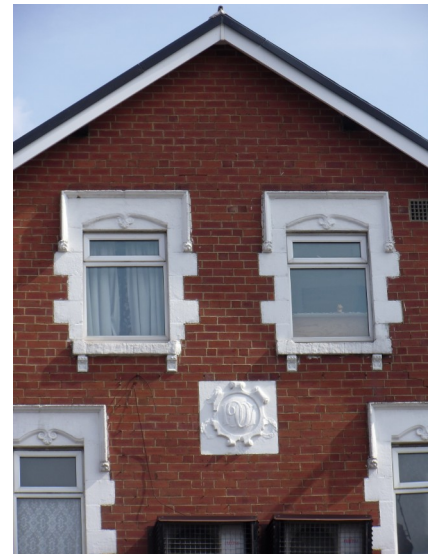
These houses are different to the others in the area. How many of them can you find?



**Q13 - What Edwardian features can you see in the houses in Luxor Road?**

**Q14 - When was this shop-house built?**

Can you see when this shop-house on Luxor View / Harehills Road / Luxor Avenue was built? Clue - look up!



**Answers:** Q2 It was a boot scraper. There would have been a horizontal metal bar - you can see the remains of it on some scrapers. It meant that people could clean their muddy boots rather than take dirt into the house with them. Q4 They are semi-circular / arched. Q5 Elford Grove and Bayswater Crescent. Q6 22. Q7 It was a shop-house. You can still see the shop window, fascia sign and corner entrance door. In 1900, it was a grocery store run by Mrs Annie Lamb. Q8 They do not have a row of houses attached to the back of them - they are 'blind backs'. They have this name because even though they have an outside wall at the back of them, there are no windows - there are no views so they are 'blind'. Q9 1897. Q10 The original garden railings. The others were taken for the war effort so they could be melted down to make new metal items. Apparently they were never recycled into anything new! Q12 18. Q13 stone window surrounds, hinged windows, curved windows and floral stained glass fanlight designs, bay windows, dormer windows, porches, each house has its own outdoor WC. Q14 1907.

## Facts – Who lived and worked here?

### **Denis and Annie Armitage**

Draper Dennis worked with his dressmaker daughter Annie at 19a Lascelles Road East between 1897 and 1904. There are lots of examples in the area of family members living and working together.

### **Ernest, Mary and Frank Armitage**

Ernest and Mary Armitage were Irish immigrants. They lived at 52A Harehills Road 1912 to 1955, with their four children. Ernest was a bootmaker, and when he was old enough, his son Frank joined him in the business.

The shop was part of the house, and there was just a curtain to separate the two spaces. It was hard work in the shop and the cold stone floor made their legs hurt so they used to stand on wood to try and stay a bit warmer.

The picture was provided by Frank's granddaughter Mary. It shows Ernest reading a book in his basement kitchen. The shop was behind him.



### **Alfred Hogg**

A good example of local ambition comes from census and directory data for the butcher's shop at 72 Harehills Road, run by the aptly named Alfred Hogg from 1897 to 1904.

In 1903 he was also listed as a refrigerator maker working with two colleagues, probably because they needed to keep the shop produce fresh. It is not known what happened to the refrigerator business after that – perhaps Leeds was not ready for refrigeration at that early date, or maybe the refrigerator business had outgrown the back-to-back and moved elsewhere in the city.

The meat sales seemed to be going well in Harehills however, as Alfred had an additional shop at 56 Bayswater Road from 1901 to 1905.

### Enos and Elizabeth Gott

This couple lived and worked at 19-21 Conway Mount. Their daughter Hannah worked as a cloth mender in a woollen mill. The photograph shows them outside their grocery and confectionery shop in 1909.



## Historic photos

Can you spot any difference between then and now?

All images in this section by kind permission of Leeds Libraries, [www.leodis.net](http://www.leodis.net)

View looking up Zetland Place

<https://www.leodis.net/viewimage/120140>



Shop-houses and houses on Roundhay Road / Bayswater Crescent  
<https://www.leodis.net/viewimage/64227>



Shop-house and houses on Ashton Terrace  
<https://www.leodis.net/viewimage/66011>



Houses in Luxor View  
<https://www.leodis.net/viewimage/69719>



## Additional activities and resources

### Younger people -

<https://harrisonarchitecturalheritage.co.uk/home/community-engagement/heritage-open-days-2025>

### Older people -

Short reads:

<https://secretlibraryleeds.net/tag/joanne-harrison/>

Long reads:

<https://www.tandfonline.com/doi/full/10.1080/03090728.2017.1398902>

[https://backtobackhouses.wordpress.com/wp-content/uploads/2019/02/harrison\\_back-to-back-houses-in-twenty-first-century-leeds\\_goa.pdf](https://backtobackhouses.wordpress.com/wp-content/uploads/2019/02/harrison_back-to-back-houses-in-twenty-first-century-leeds_goa.pdf)

A very long read:

<https://etheses.whiterose.ac.uk/id/eprint/32589/>

## Feedback

If you would like to leave feedback about this trail, please visit <https://bit.ly/hodsfeedback>



This event is funded by Harrison Architectural Heritage Ltd and Leeds Civic Trust.

